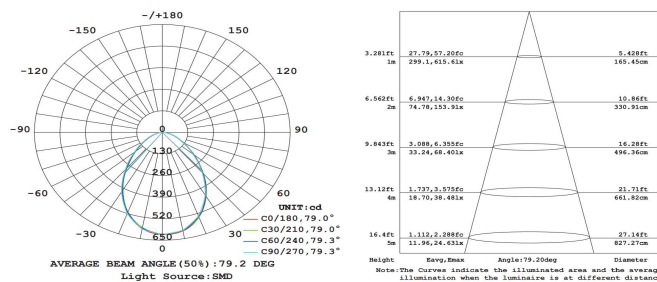

**COOLLUX**
**CE**
**RoHS**

**BRIDGELUX**

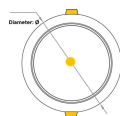
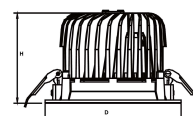
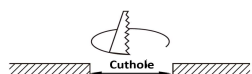
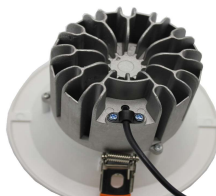
**CRI  
≥80**

- △ Crown shape COB LED downlight for architecture project lighting.
- △ Thickening die-casting aluminum housing with fine paint finishing.
- △ Excellent ventilation to dissipate heat that ensures stable working.
- △ Professional designed and high end optical aluminum reflector.
- △ High tempered transparent glass cover, brings nice light output.
- △ Bridgelux chips COB inside, high Ra>80/90, high lumen 150Lm/W.
- △ COB LED meets standards LM80 / EN62471 / RoHS / REACH144.
- △ High quality Isolated constant current driver, no flicker, high PF>0.90.
- △ LED driver meets standards CE / CB / TUV / BIS / CCC / SAA / FCC.
- △ Reliable quality and stable performance, low heat and low light decay.
- △ 50,000 hours life time, eco-friendly materials, up to 80% power saving.

(luminous intensity and lux distribution diagrams)



Model	Size	Cut Hole	Power	Beam Angle	PF	Ra	Flicker	Voltage	Lumen
CL-DL005050	Ø230x110mm	Ø200mm	50W	80°	>0.90	>80/90	No	90-350VAC	4650LM

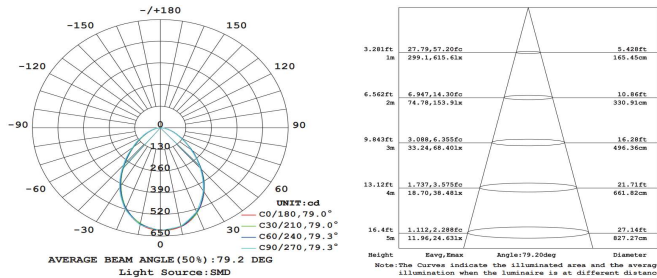

**COOLLUX**
**CE**
**RoHS**

**BRIDGELUX**

**CRI  
≥80**

- △ High end, robust and durable COB LED downlight full size series.
- △ Thickening die-casting aluminum housing with fine paint finishing.
- △ Excellent ventilation to dissipate heat fastly that ensures stable working.
- △ Professional designed and high end optical aluminum reflector.
- △ High tempered transparent glass cover, brings nice light output.
- △ Bridgelux chips COB inside, high Ra>80/90, high lumen 150Lm/W.
- △ COB LED meets standards LM80 / EN62471 / RoHS / REACH144.
- △ High quality Isolated constant current driver, no flicker, high PF>0.90.
- △ LED driver meets standards CE / CB / TUV / BIS / CCC / SAA / FCC.
- △ Reliable quality and stable performance, low heat and low light decay.
- △ 50,000 hours life time, eco-friendly materials, up to 80% power saving.

(24W luminous intensity and lux distribution diagrams)



Model	Size	Cut Hole	Power	Beam Angle	PF	Ra	Flicker	Voltage	Lumen
CL-DL006007	Ø110x75mm	Ø75mm	7W	80°	>0.90	>80/90	No	90-350VAC	650Lm
CL-DL006012	Ø130x100mm	Ø90mm	12W	80°	>0.90	>80/90	No	90-350VAC	1100LM
CL-DL006018	Ø158x102mm	Ø105mm	18W	80°	>0.90	>80/90	No	90-350VAC	1750LM
CL-DL006024	Ø180x125mm	Ø150mm	24W	80°	>0.90	>80/90	No	90-350VAC	2250Lm
CL-DL006036	Ø230x140mm	Ø200mm	36W	80°	>0.90	>80/90	No	90-350VAC	3350LM